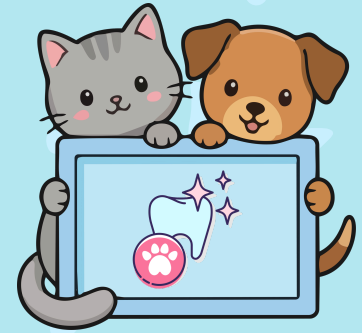


# 3 simple steps to start brushing



Most dogs and cats show no obvious external signs of periodontal disease. That's why a dental check up is an important part of your annual wellness examination.

## dog-friendly toothpaste



Never use people pasté, since it can be harmful when ingested. Use toothpaste made for pups in a flavor like chicken or tuna.

## what you'll need:

## toothbrush for dogs



Dog toothbrushes are smaller and softer than human toothbrushes. There are also options available to wear on your finger!

### 1. start with a massage

Get your dog used to the idea by gently massaging the lips and gradually moving to the gums and teeth.



### 2. add toothpaste

Put a dab of dog-friendly toothpaste on your finger to get your dog used to the taste and feel of it.

### 3. Introduce the toothbrush

Hold the brush at a 45° angle and clean in small circular motions working on one part of the mouth at a time.



## have a cat? try tuna water!



Warm your cat up to the idea of brushing by dipping your finger in tuna water. Let your cat lick it off and gradually begin massaging the gums.



## signs of Periodontal Disease

- Bad Breath
- Loose or broken teeth
- Inflamed gums
- Bleeding gums
- Difficulty chewing
- Sensitivity around the mouth
- Excessive drooling
- Loss of appetite



**ASPCA** PET HEALTH INSURANCE

A legacy of pet care and protection  
Get a free quote at [WeCoverThat.com](https://www.wecoverthat.com)



Source: Veterinary Oral Health Council, <https://vohc.org/>  
Insurance products are underwritten by either Independence American Insurance Company (NAIC #26581), or United States Fire Insurance Company (NAIC #21113); please refer to your policy forms to determine the underwriter for your policy. All policies are produced by PTZ Insurance Agency, Ltd, domiciled in Illinois with corporate offices at Scottsdale, AZ (NPN: 5328528) and PTZ Insurance Agency, Ltd, d.b.a. PIA Insurance Agency in California (CA #0E36937).

The ASPCA® is not an insurer and is not engaged in the business of insurance. Through a licensing agreement, the ASPCA receives a royalty fee that is in exchange for use of the ASPCA's marks and is not a charitable contribution.

© Copyright 2026, PTZ Insurance Agency, Ltd. ASPCA Logo, © Copyright 2026, ASPCA. All Rights Reserved U0426\_StartBrush