

pet-proof your place

Is your pet safe at home? Here's a guide to make sure.

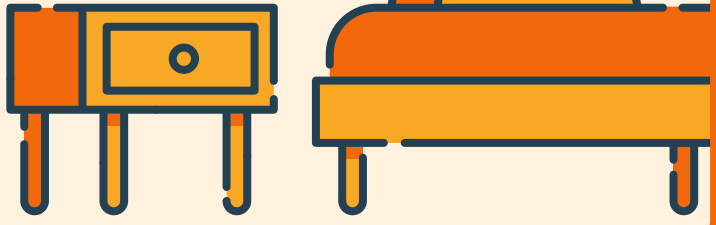
bathroom

Keep medications, chemicals, and cleaning supplies locked away, and close toilet lids to prevent pets from drinking harmful chemicals.



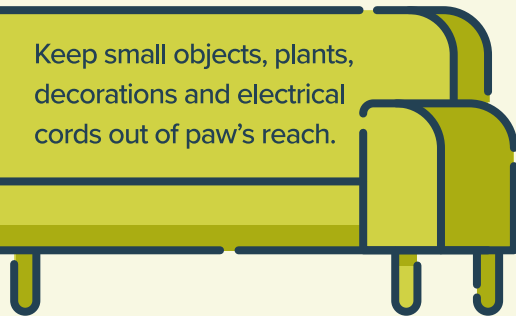
bedroom

Keep medications, jewelry, and small items that pets could ingest out of reach.



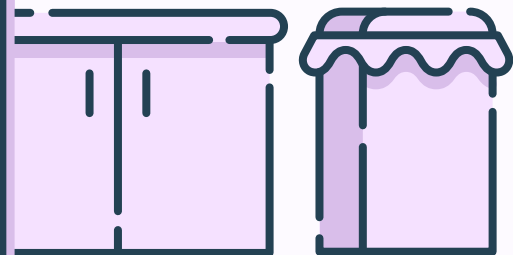
living room

Keep small objects, plants, decorations and electrical cords out of paw's reach.



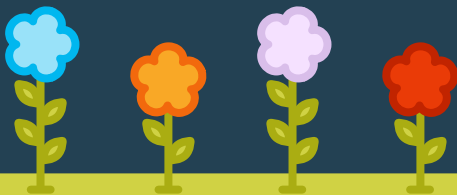
kitchen

Secure cabinets and trash bins in the kitchen to prevent access to food.



lawn

Secure fences and remove toxic plants. When using fertilizers or insecticides, follow instructions carefully and wait the specified time before letting your pet outside.



garage

Secure chemicals, sharp tools, and other equipment in a locked cabinet.



ASPCA PET HEALTH INSURANCE

Coverage for the unexpected with pet insurance
Get a quote at [WeCoverThat.com](https://www.WeCoverThat.com)



Insurance products are underwritten by either Independence American Insurance Company (NAIC #26581, A Delaware insurance company located at 11333 N. Scottsdale Rd, Ste. 160, Scottsdale, AZ 85254), or United States Fire Insurance Company (NAIC #21113, Morristown, NJ). Please refer to your policy forms to determine the underwriter for your policy. Insurance is produced by PTZ Insurance Agency, Ltd. (NPN: 5328528, Domiciled in Illinois with offices at 1208 Massillon Road, Suite G200, Akron, Ohio 44306), (California residents only: PTZ Insurance Agency, Ltd., d.b.a PIA Insurance Agency, Ltd., CA license #0E36937). The ASPCA® is not an insurer and is not engaged in the business of insurance. Through a licensing agreement, the ASPCA receives a royalty fee that is in exchange for use of the ASPCA's marks and is not a charitable contribution. 0324-PETPROOF