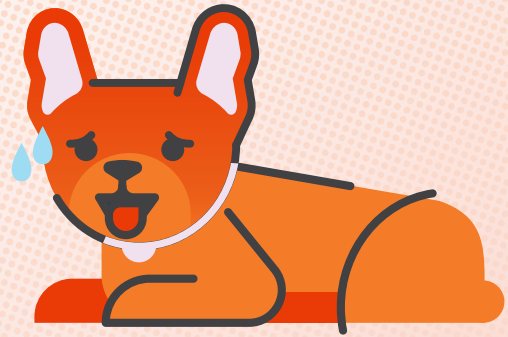


how hot is too hot?



90°

102°

120°

Even on a 70° day, the inside of your car could get **up to 20° hotter**.

On an 85° day, it **only takes ten minutes** for the interior of your car to reach 102°.

Within 30 minutes, the inside of your car climbs **from 85° to 120°**.



Pets that are young, elderly, or overweight are **most susceptible to overheating**, as well as dogs with short muzzles or thick and dark-colored coats.



Leaving pets unattended in a vehicle under unsafe conditions, such as on a hot day, is **prohibited by law** in many areas.



A vehicle can overheat even with the windows left **open an inch or two**.



Shade moves with the sun and provides **very little protection** on a hot day.



If you spot a pet inside a car on a hot day, try to **find the owner**. If that's not possible, **call 911** and remain by the vehicle until assistance arrives.

ASPCA PET HEALTH INSURANCE

Coverage for the unexpected with pet insurance
Get a quote at [WeCoverThat.com](https://www.wecoverthat.com)



Insurance products are underwritten by either Independence American Insurance Company (NAIC #26581. A Delaware insurance company located at 11333 N. Scottsdale Rd, Ste. 160, Scottsdale, AZ 85254), or United States Fire Insurance Company (NAIC #21113. Morristown, NJ). Please refer to your policy forms to determine the underwriter for your policy. Insurance is produced by PTZ Insurance Agency, Ltd. (NPN: 5328528. Domiciled in Illinois with offices at 1208 Massillon Road, Suite G200, Akron, Ohio 44306). (California residents only: PTZ Insurance Agency, Ltd., d.b.a PIA Insurance Agency, Ltd. CA license #0E36937). The ASPCA® is not an insurer and is not engaged in the business of insurance. Through a licensing agreement, the ASPCA receives a royalty fee that is in exchange for use of the ASPCA's marks and is not a charitable contribution. 0224-HOWHOT